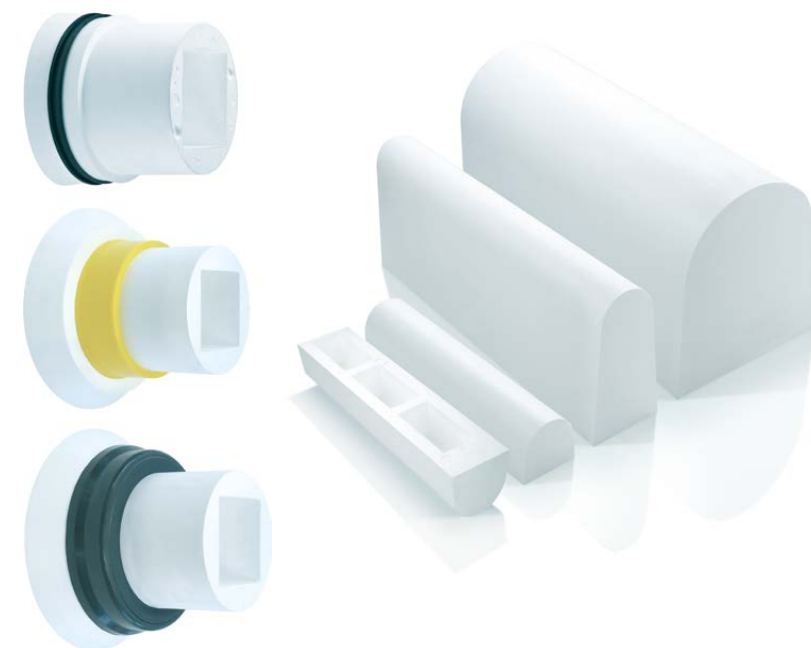


PERFECT BASE

INDUSTRIAL
PRODUCTION SYSTEM FOR
INDIVIDUAL MONOLITHIC
MANHOLE BASES





Return on investment

Increase of sales by short term availability and fulfilment of individual customers requirements.

PERFECT raises profitability of monobase production and added value in concrete production in many ways.

- Optimized usage of resources: lower material expenses, minimized personnel expenditure, avoidance of reject.
- One-stop-shop: innovative production technology, optimized production process, high quality moulds, recycling of process material.
- Short paying off period by matching production technology to the users needs individually.

User friendly

Integrated lifting anchors – safe handling on the building site. All relevant product data from the contract section to the individual racks can be specified directly on the manhole base – simpler allocation of the manhole bases on the building site.

Individual

Each manhole base meets the customer's expectations concerning moulding of the channel, diameter of pipe connection, height and incline in the channel, decline of berm and use of integrated gaskets. Customized channel configurations with freely definable characteristics.

Product parameters:

Nominal diameter:

from 24 up to 83 inches (600–2100 mm)

Pipe connections:

up to 40 inches (1000 mm)

Individually determined:

- Wall thickness
- Heights (channel, clear height, overall height)
- Inclination of the channel (e.g. 1:20)
- Inclination of the berm
- Position of the inlets and outlets
- Number of connections
- Pipe connection type
- Seal types (integrated, loose, plastic inserts)

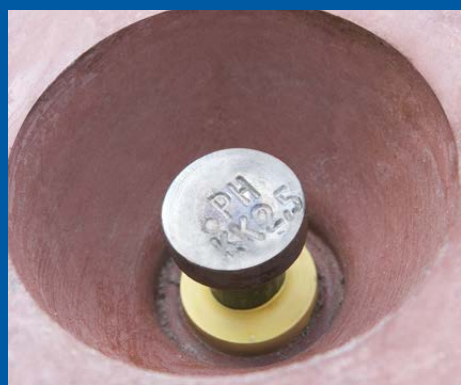
Monolithic – in one pour!

To meet the individual needs of your customers with an economical way of production and to achieve high quality standards in spite of shortest availability – that's what **PERFECT** means. An individual monolithic manhole base made available by a well-proven production system.

Almost any channel configuration and pipe connection can be realized in very short time by the use of molded polystyrene parts which are completely adjusted to customers needs and which can be recycled after use. You may gain additional advantages by the usage of high performance concrete and your readiness for delivery in less than 24 hours.

Flexibility

Variable design of the required angle and gradient of each single connection. Appropriate mould parts for all kinds and dimensions of in- and outlets, electively with integrated gaskets.





PERFECT Base

The truly INDUSTRIAL WAY OF MANUFACTURING

PERFECT Software

Less effort for preparation of work by use of the functional PERFECT software for the entire data collection (diameter, inclines, inlets, pipe connections). Improvement of the logistic process in the whole manhole production including order entry, calculation, work preparation, production, individual product labelling and shipment.

Data collection - interfaces

The required product properties are recorded either directly by the production system operator or via easy-to-configure interfaces from all common ordering or planning systems. Incomplete or incorrect orders are avoided right from the start thanks to operator guidance. The accuracy of the production data is thus ensured despite maximum flexibility in the selection of product properties.

PERFECT hot wire technology

The three dimensional cutting operation applying hot wire technology allows the production of custom made negative moulds.

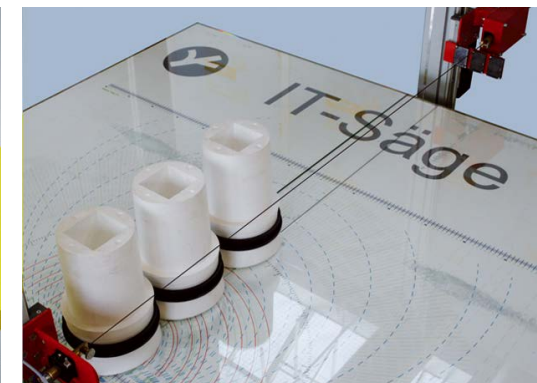
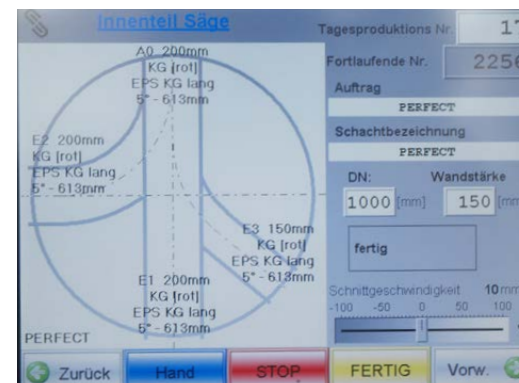


Production

The production is speeded up due to the automatic production and the optimal logistical process: Even though highest flexibility, - with the sequences given, the process safety and comprehensibility of all process parameters is always guaranteed. The cycle time is decreased, the added value in the concrete plant is increased!

Ergonomics

The preparation of the mould for the production of manhole bases is carried out under ergonomic working conditions: Handling light components in a quiet and clean workplace.





In one POUR

Custom made

Use of polystyrene mould parts as negative moulds for individual channel configurations.

Smart and simple

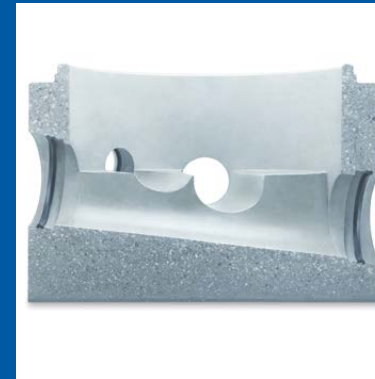
The use of high quality mould equipment helps the operator to operate easily and swiftly, reduces cleaning and maintenance work and steadily leads to the desired products with perfect surfaces free of burrs.

Flexible production system with usage of mould equipment either stationary or portable. In both cases main processes like concreting or demoulding of cured products can be adapted according to the producer's requirements.

Monolithic

Within minutes an individual monolithic manhole base with or without reinforcement emerges by method of pouring with self compacting concrete. Monolithic execution in defined quality of concrete (eg C40/50 or C60/70) – in one pour, hardened in the mould and without any further surface treatment.

Accurately executed connection points via coplanar surfaces which are accurate to the dimension – for tight and safe connections. Permanent resistance against chemical, thermal and mechanical stress. Manhole base made of selfcompacting concrete exceeds the minimum requirements of international standards (EN1917+ national amendments).



Environmentally safe

100 percent of polystyrene parts used in production can be recycled. If required we accept taking back used material and will be engaged recycling it for ourselves efforts.

Material consumption is minimized first of all due to the resource-friendly design of the polystyrene elements. Further on primary energy input, which causes CO2 emissions, is unbeatably low.

Stable and buoyancy-proof

Concrete manhole bases, due to their sheer mass, offer high stability even for deep manhole structures.

For particularly challenging groundwater conditions, manhole bases can also be custom-made with additional buoyancy protection.

Delivery and placement in 24 hours

In less than 24 hours the manhole base with the individually formed channels is ready for transport to the customer. **PERFECT** – out of the mould – on the truck! A safe installation of the manhole base in exact accordance with the requirements of the building site by use of the integrated lifting anchors.



SCHLÜSSELBAUER 
TECHNOLOGY

SCHLÜSSELBAUER Technology GmbH & Co KG
Hörbach 4, 4673 Gaspoltschhofen
Tel. +43 7735 71440
E-mail: sbm@sbm.at | www.sbm.at

SCHLÜSSELBAUER North America LLC
104 Hartmann Commerce Drive, TN 37090 USA
Tel. +1 615 742 7274
E-Mail: support@sbt-na.com | www.sbt-na.com